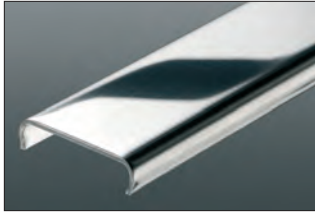
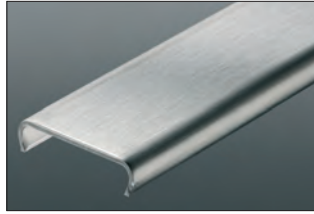


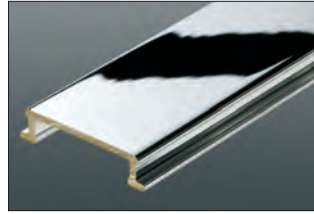
Available Finishes



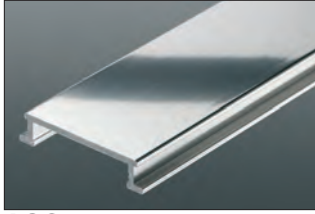
E Stainless steel 304 (1.4301=V2A)



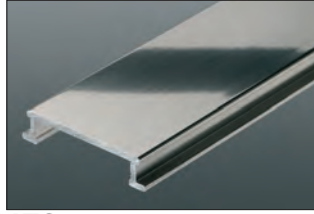
EB Brushed stainless steel 304 (1.4301=V2A)



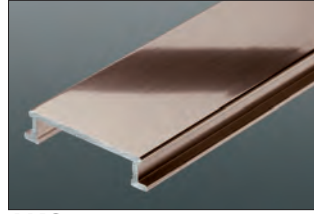
MC Chrome-plated solid brass



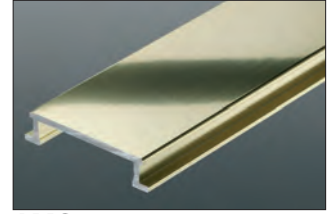
ACG Polished chrome anodized aluminum



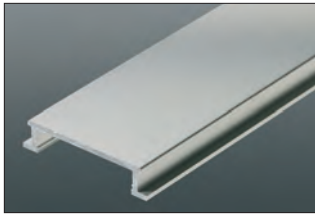
ATG Polished nickel anodized aluminum



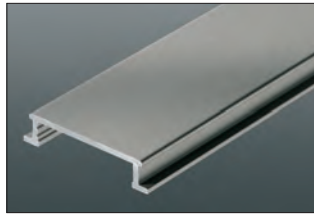
AKG Polished copper/bronze anodized aluminum



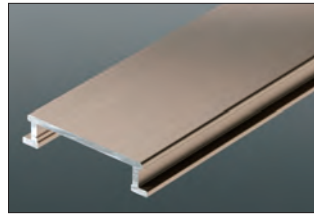
AMG Polished brass anodized aluminum



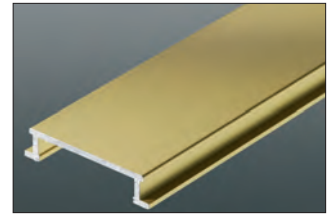
AE Satin anodized aluminum



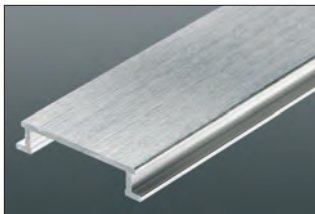
AT Satin nickel anodized aluminum



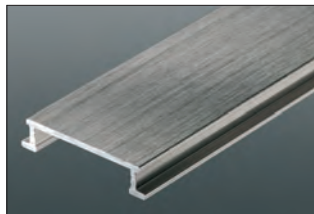
AK Satin copper/bronze anodized aluminum



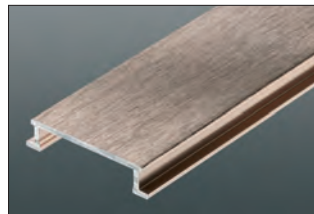
AM Satin brass anodized aluminum



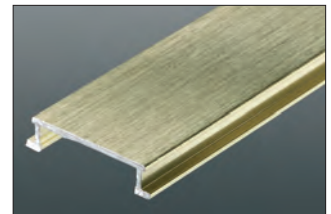
ACGB Brushed chrome anodized aluminum



ATGB Brushed nickel anodized aluminum



AKGB Brushed copper/bronze anodized aluminum



AMGB Brushed brass anodized aluminum