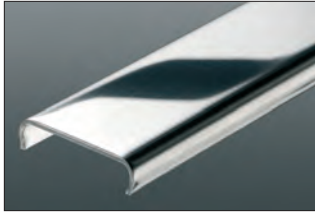
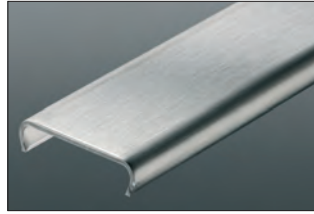


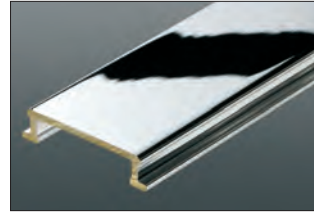
Available Finishes



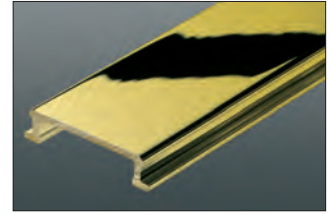
**E** Stainless steel 304 (1.4301=V2A)  
High-grade stainless steel 316 L  
(1.4404=V4A)



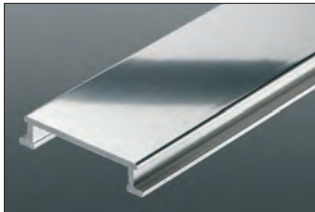
**EB** Brushed stainless steel  
304 (1.4301=V2A)



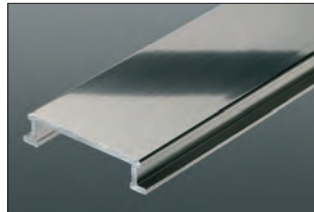
**MC** Chrome-plated solid brass



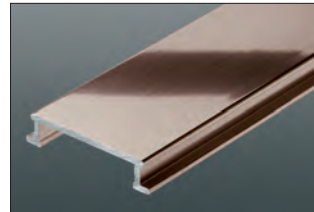
**M** Solid brass



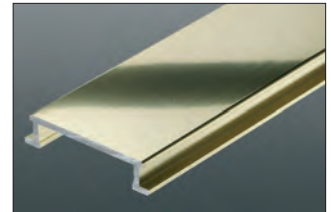
**ACG** Polished chrome  
anodized aluminum



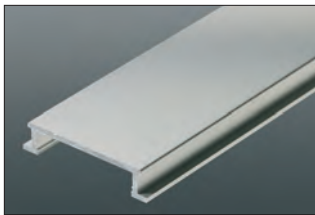
**ATG** Polished nickel  
anodized aluminum



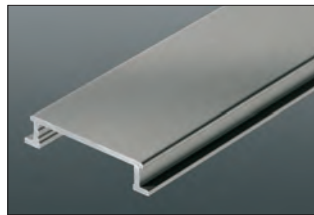
**AKG** Polished copper/bronze  
anodized aluminum



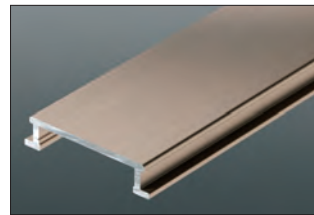
**AMG** Polished brass  
anodized aluminum



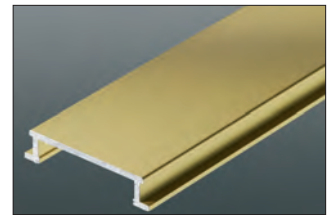
**AE** Satin anodized aluminum



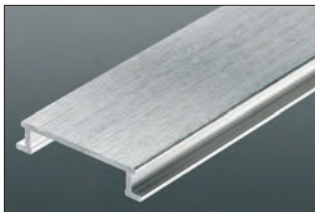
**AT** Satin nickel  
anodized aluminum



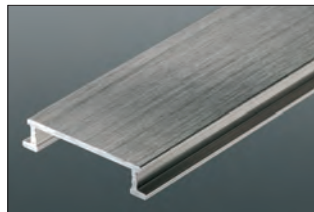
**AK** Satin copper/bronze  
anodized aluminum



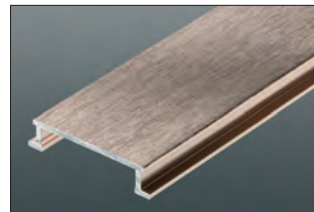
**AM** Satin brass  
anodized aluminum



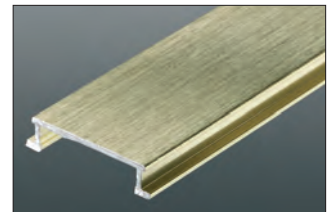
**ACGB** Brushed chrome  
anodized aluminum



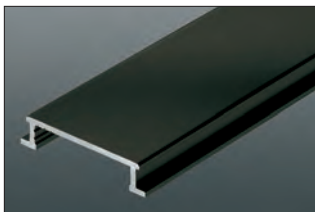
**ATGB** Brushed nickel  
anodized aluminum



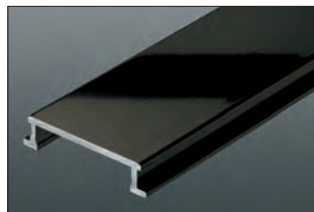
**AKGB** Brushed copper/bronze  
anodized aluminum



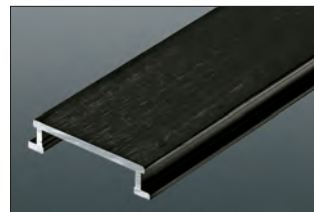
**AMGB** Brushed brass  
anodized aluminum



**AGR** Graphite anodized aluminum



**AGSG** Bright black  
anodized aluminum



**AGSGB** Brushed black  
anodized aluminum

Available Colors for PVC & Color-Coated Aluminum



**BW**  
Bright white  
RAL 9001



**W**  
White  
RAL 9010



**SP**  
Sand pebble  
Ral N/A



**BH**  
Bahama  
Ral N/A



**HB**  
Light beige  
Ral N/A



**HG**  
Light grey  
Ral 7035



**PG**  
Classic grey  
Ral N/A



**G**  
Grey  
Ral 7030



**GS** <sup>PVC only</sup>  
Black  
Ral 9011